



LENZING COLORS

TRENDS SPRING/SUMMER 2014





TRENDS
SPRING/SUMMER
2014



SPRING-SUMMER 2014

RESOURCE RE-SOURCE RESOURCEFUL

Fibre development can influence the entire life-cycle of a garment.

Re-juvenating textile waste can take us far.
Fashion design is important in supporting this.

Multiplicity of ideas and solutions; the epoch is creative.

Openness is the punch-line.

Innovators, changemakers and collective mindsets are the drive behind reforms.

Design for need.

Craft offers a renewed interest in artisanal intelligence.

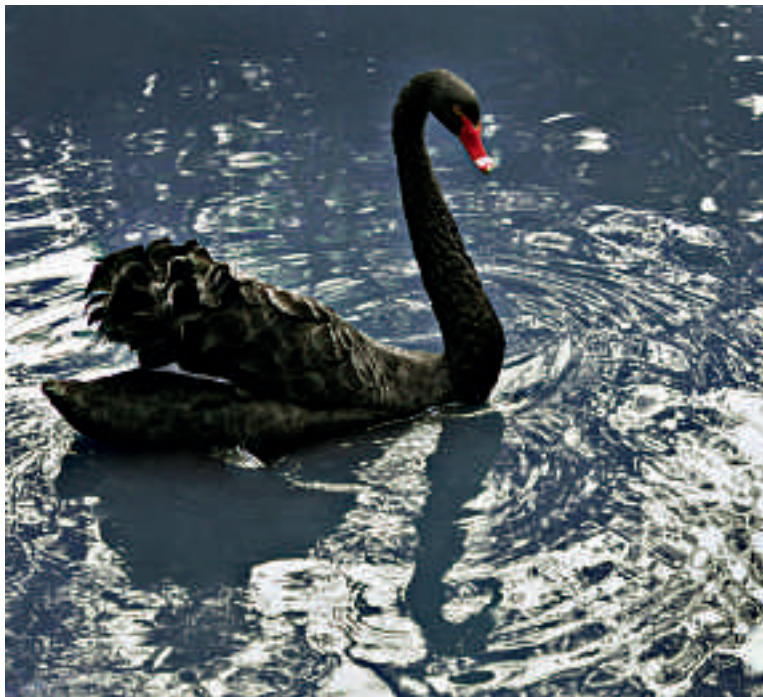
This is how we conceive all this to be,
on the fashion scene, through our themes:
SENSUAL, SERENE, COLORQUAKE, OASIS
and DIAPHANOUS



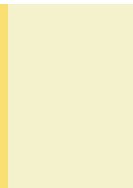
TRENDS
SPRING/SUMMER
2014



SENSUAL



Hot summer



PANTONE TPX
19-1018

PANTONE TPX
19-3638

PANTONE TPX
17-1349

PANTONE TPX
17-1558

PANTONE TPX
17-1422

PANTONE TPX
19-4215

PANTONE TPX
12-0737

PANTONE TPX
11-0205



TRENDS
SPRING/SUMMER
2014



Seductive Desire Sensual Racy Lugubrious Slinky Tactile
Perfectionist Intense Alive Devotion Ceremony Voluptuous



TRENDS
SPRING/SUMMER
2014



Both female and male.
Satins catching the light.
Mono-color embellishment in laser-cut.
Jacquard in different textures. Paint-like prints.
Silhouettes carved in rich, fat fabrics as if in marble.
Jersey and open knit – in super sophisticated silks and microfibre.



TRENDS
SPRING/SUMMER
2014



SERENE



I've got the blues



PANTONE TPX
16-3925

PANTONE TPX
18-3921

PANTONE TPX
14-4811

PANTONE TPX
17-1137

PANTONE TPX
16-4020

PANTONE TPX
11-0605

PANTONE TPX
18-4034



TRENDS
SPRING/SUMMER
2014

○

Simple natural fresh spring
Composed clean confident mood
Low-pressure vintage aura
Feel-good pre-loved old colors





TRENDS SPRING/SUMMER 2014



The story of indigo and artisan skill; we are longing for the sense of natural colors, for handmade authenticity. We want to relate to the narration of denim. Patterns arise through color blocks and garments in beautiful differing blues. Plain, reps and diagonal weaves, acquire interesting expressions mixing different weights and handles. Flat knitting. Coarse old-time jersey.

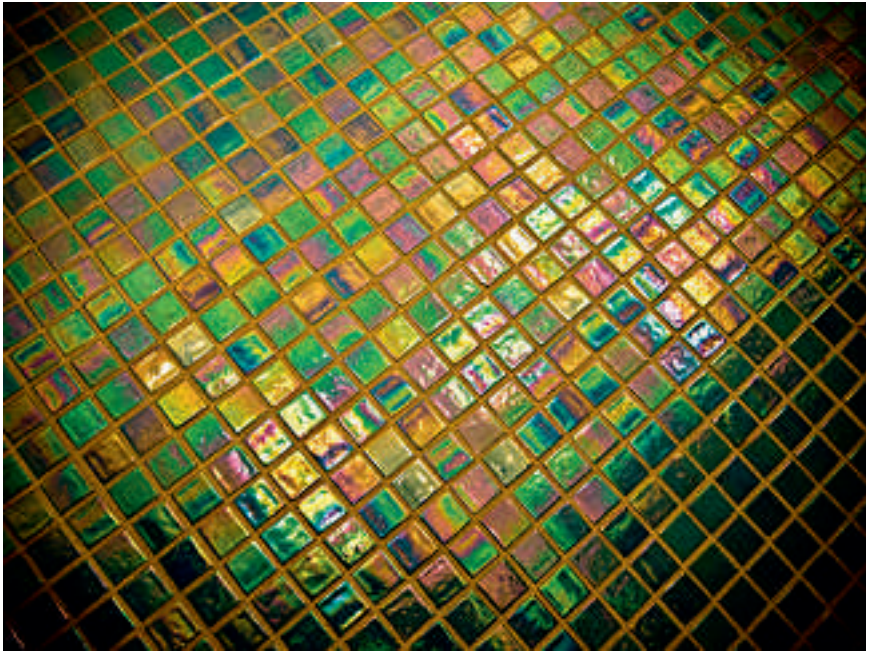




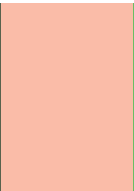
TRENDS SPRING/SUMMER 2014



COLORQUAKE



This meets That



PANTONE TPX
11-0622

PANTONE TPX
18-0523

PANTONE TPX
14-1219

PANTONE TPX
15-0146

PANTONE TPX
14-3903

PANTONE TPX
19-2041

PANTONE TPX
16-1126

PANTONE TPX
16-1451



TRENDS
SPRING/SUMMER
2014



MontageFunnyDistortion
ForwardPrettyUglySurprise
StrangeBoldJumbleFusion
VigorousCrazyCool
WasteLuxExperiment
StateOfTheFashion!





TRENDS SPRING/SUMMER 2014



Waste textiles, or garments out of fashion, are rejuvenated.

Print, jacquard, layering, cut and paste ...

all kinds of embellishments and elaborations.

Clash between hard-core technical attitude and natural materials ...

Natural materials acquiring technical capacity.

Social networking, social knitting, crocheting a coral reef.





TRENDS
SPRING/SUMMER
2014

OASIS



Pop-up lushness

PANTONE TPX
11-4802

PANTONE TPX
15-6114

PANTONE TPX
15-1307

PANTONE TPX
16-0540

PANTONE TPX
18-3710

PANTONE TPX
15-1049

PANTONE TPX
18-1355



TRENDS SPRING/SUMMER 2014



Radiant tones

Brightly dull

Sun-baked tone-tan

Diminish colors

Bitter cocktail

Hotter

Parched

Desiccated land

Filtered

Scratchy

Screen

Zest & zing





TRENDS
SPRING/SUMMER
2014

Handles are dry and dusty like arid land.
Natural materials are dissolved and re-formed.
Surfaces are rough; visible grain in weaves.
Warp print to stir simple and graphic stripes and checks.
Prints are more of textures than of patterns.





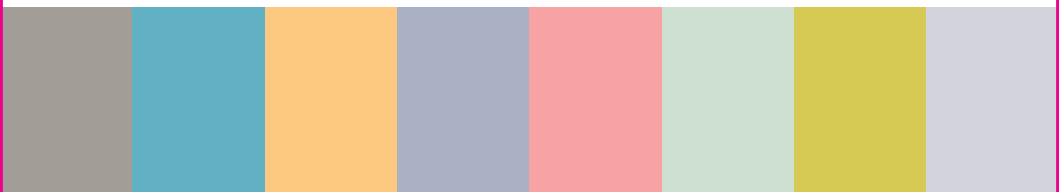
TRENDS SPRING/SUMMER 2014



DIAPHANOUS



Precious opaque



PANTONE TPX
15-3800

PANTONE TPX
15-4415

PANTONE TPX
13-0935

PANTONE TPX
15-3908

PANTONE TPX
14-1521

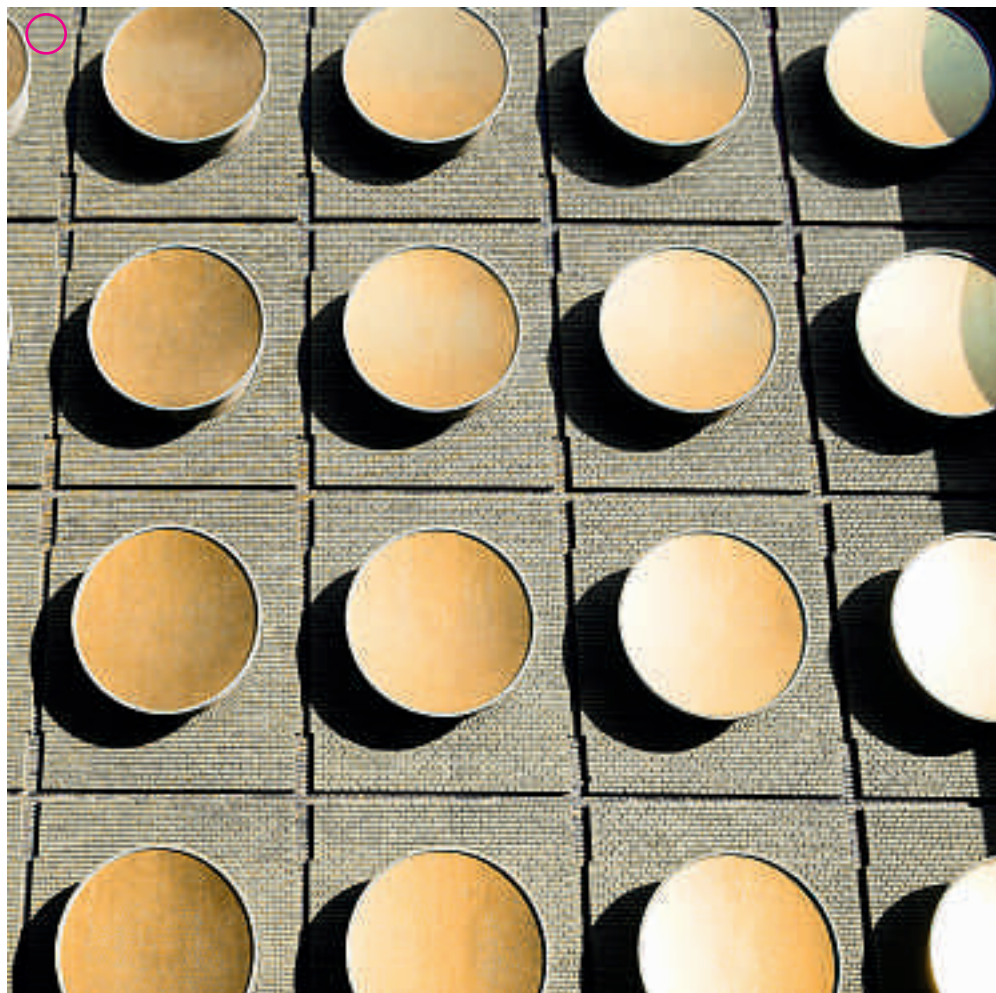
PANTONE TPX
12-6205

PANTONE TPX
14-0647

PANTONE TPX
13-4105



TRENDS
SPRING/SUMMER
2014



Cool and chilled handles, soft and transparent layered fabrics. Papertouch and smooth, openwork jersey mingling. Sophisticated sheen. Devoré and extreme lightweight, set off an airy sensation. Sheer discipline in ornamentation.



TRENDS SPRING/SUMMER 2014



Minerals
Sour grass
Gemstones
Succulent
Magnify botanic
Tender alchemy
Shades of modernity





TRENDS
SPRING/SUMMER
2014



***HIGH SUMMER
SUPERBRIGHTS***

*synthetic >< natural
textural >< plain
zip >< rope
agile action packed*



TRENDS SPRING/SUMMER 2014



NEON NEUTRALS

13-4108 TPX

14-4106 TPX

15-1218 TPX

15-1506 TPX

19-3815 TPX

16-1360 TPX

13-0550 TPX

16-5427 TPX

16-4535 TPX

18-2140 TPX



TRENDS SPRING/SUMMER 2014



mottled jacquard in jersey
and weave

performance is imperative

moisture management
and UV protection

jersey stretch /
solid weave /
open mesh

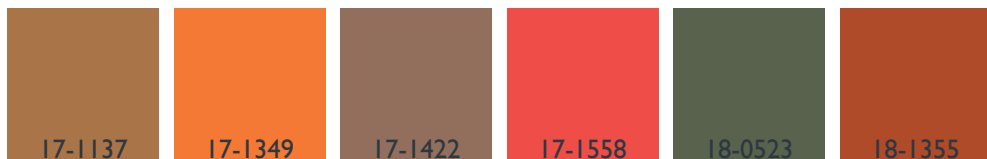
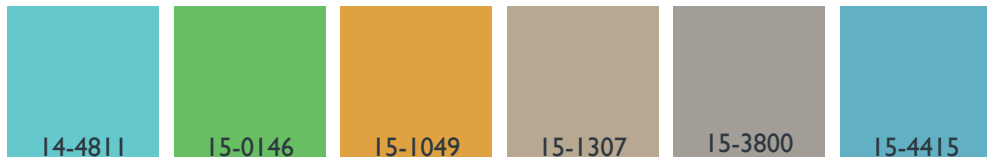
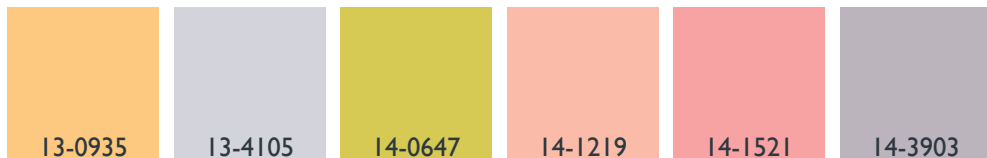
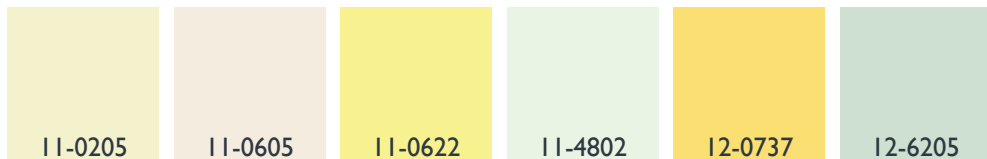




TRENDS
SPRING/SUMMER
2014



COLOR / WOMEN

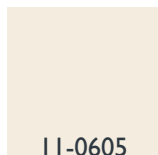




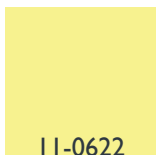
TRENDS SPRING/SUMMER 2014



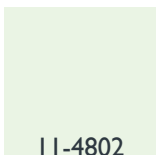
COLOR / MEN



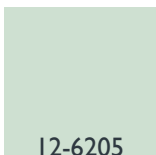
11-0605



11-0622



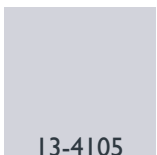
11-4802



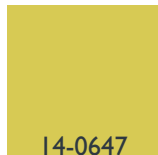
12-6205



13-0935



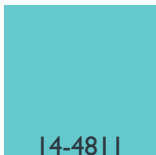
13-4105



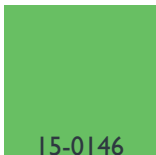
14-0647



14-1521



14-4811



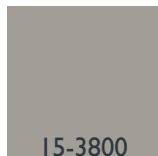
15-0146



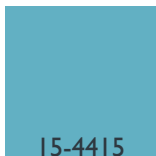
15-1049



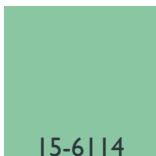
15-1307



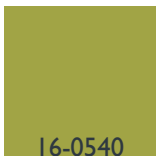
15-3800



15-4415



15-6114



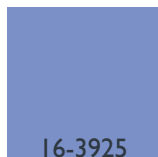
16-0540



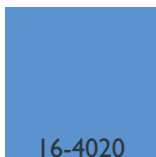
16-1126



16-1451



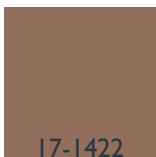
16-3925



16-4020



17-1137



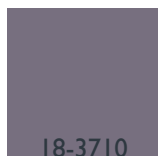
17-1422



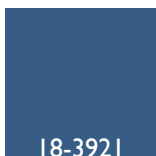
18-0523



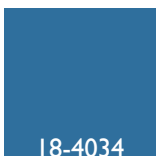
18-1355



18-3710



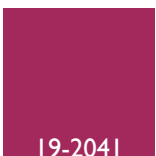
18-3921



18-4034



19-1018



19-2041

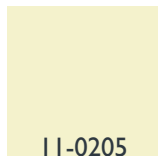


19-4215

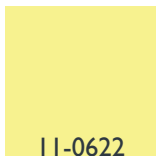


TRENDS SPRING/SUMMER 2014

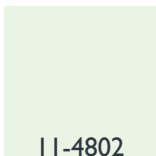
COLOR / INTIMO WOMEN



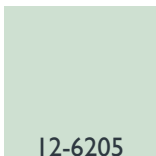
11-0205



11-0622



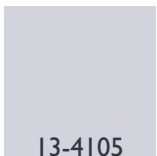
11-4802



12-6205



13-0935



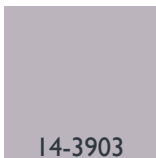
13-4105



14-1219



14-1521



14-3903



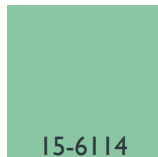
15-1307



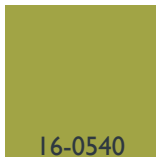
15-3800



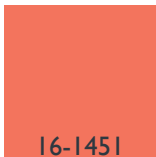
15-4415



15-6114



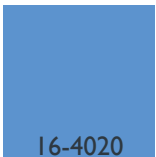
16-0540



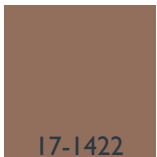
16-1451



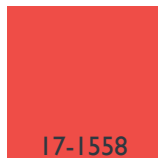
16-3925



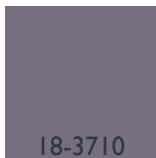
16-4020



17-1422



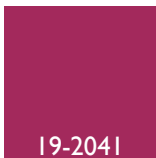
17-1558



18-3710



19-1018



19-2041



19-3638



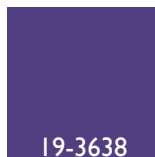
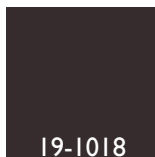
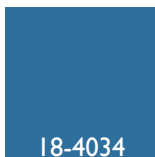
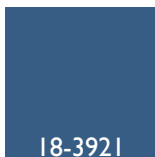
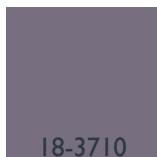
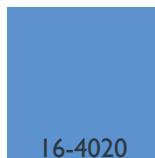
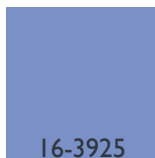
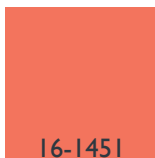
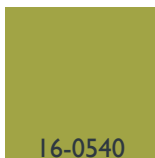
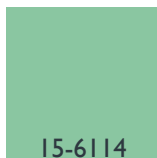
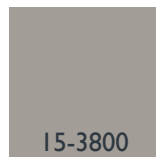
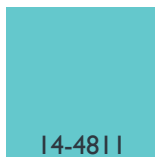
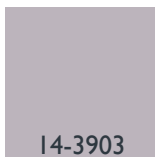
19-4215



TRENDS SPRING/SUMMER 2014



COLOR / INTIMO MEN

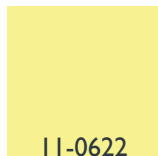




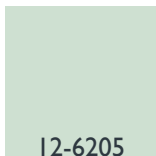
TRENDS SPRING/SUMMER 2014



COLOR / KIDS GIRLS



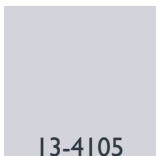
11-0622



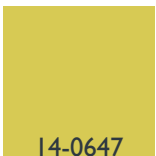
12-6205



13-0935



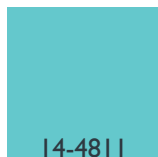
13-4105



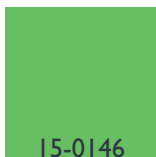
14-0647



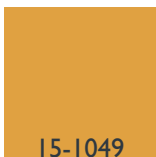
14-1521



14-4811



15-0146



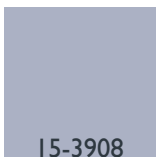
15-1049



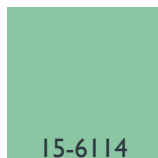
15-1307



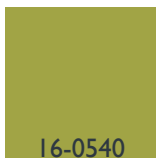
15-3800



15-3908



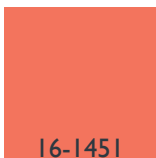
15-6114



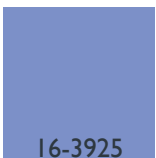
16-0540



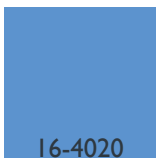
16-1126



16-1451



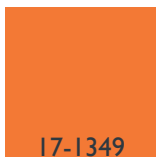
16-3925



16-4020



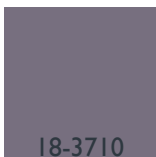
17-1137



17-1349



18-0523



18-3710



18-4034



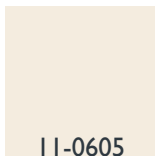
19-4215



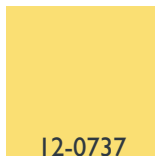
TRENDS
SPRING/SUMMER
2014



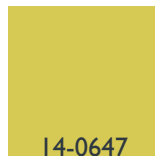
COLOR / KIDS BOYS



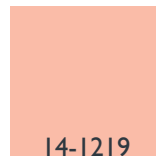
11-0605



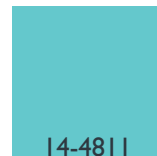
12-0737



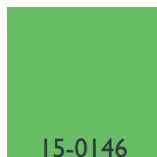
14-0647



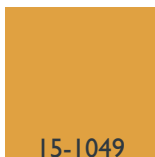
14-1219



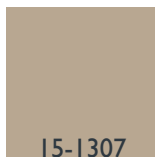
14-4811



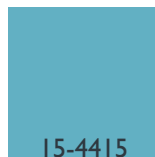
15-0146



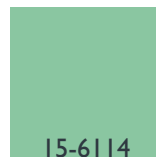
15-1049



15-1307



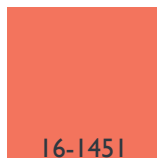
15-4415



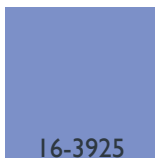
15-6114



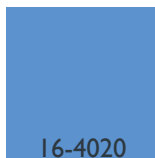
16-1126



16-1451



16-3925



16-4020



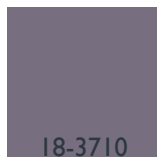
17-1137



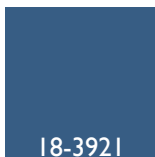
18-0523



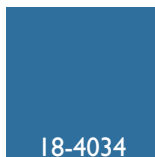
18-1355



18-3710



18-3921



18-4034



19-1018



19-2041



19-4215



Please note: Color rendition impaired due to printing. For subsequent adjustments please use the corresponding color system.
Bitte beachten: Farbwiedergabe beeinträchtigt durch Ausdruck. Für nachträgliche Änderungen verwenden Sie bitte das entsprechende Farbsystem.



LENZING
Modal[®]



TENCEL[®]



LENZING
Viscose[®]

Publisher Lenzing Textile

Trends MMgroup.uk.com

Contact Lenzing Aktiengesellschaft, A-4860 Lenzing, Austria

E-mail fibers@lenzing.com

Homepage www.lenzing.com/textile